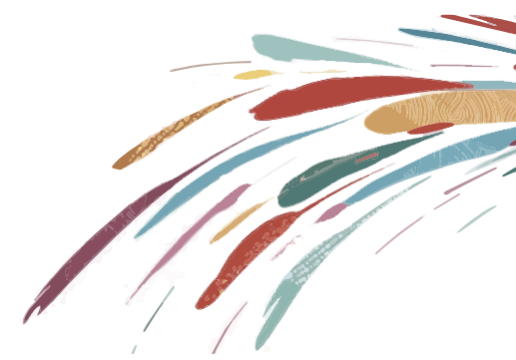


ORACLE
JD Edwards



JD Edwards Product Roadmap

Automate. Optimize. Transform.

October 2024



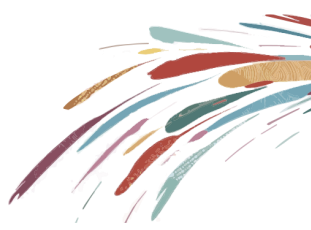
Premier Support is available through

AT LEAST 2035

Rolling 10 year window

Reinforcing Oracle's Applications
Unlimited commitment to customers
and continuous product innovation

**Premier Support provides comprehensive
maintenance and software upgrades**



Our Customers' Success Matters!

Relentlessly **Improving** and **Innovating** with JD Edwards



EnterpriseOne Releases

30+ EnterpriseOne 9.2 releases
110+ features added in the last year



JD Edwards Customers on Oracle Cloud

425+ JDE customers with Hybrid Cloud
335+ customers on OCI



The JD Edwards Ecosystem

150,000+ LearnJDE visits (last 12 months)
3,500+ JDE Connection Podcast downloads



EnterpriseOne Enhancements

860+ new enhancements in EnterpriseOne 9.2 since 2015



JD Edwards Orchestrator

1,000+ customers using JD Edwards Orchestrator



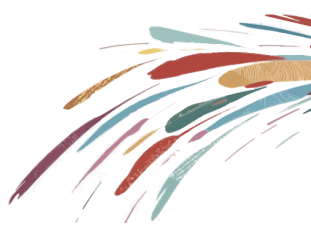
Go Lives/Successes

1,000+ go lives/upgrades
425+ customer success stories



JD Edwards Product Strategy

Automating, Optimizing and **Transforming** how you use JD Edwards



Applications

- Simplify user experience
- Automate business processes
- Enrich feature functionality

Digital Platform

- Process automation
- Low-code/no-code
- Enterprise integrations



System Administration

- Modern infrastructure
- Sentinel administration
- Predictive patching



ORACLE

JD Edwards EnterpriseOne 9.2

Release 25

Automate. Optimize. Transform.

JD Edwards Sustainability Framework

Simplify and Streamline the **Environmental** Data Collection Process



Various
Suppliers/Business
Processes



Different Standard
and Format



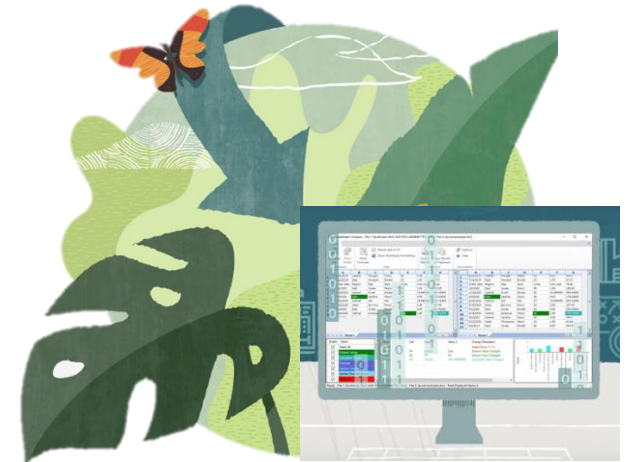
Industrial
Process



Fuel Usage



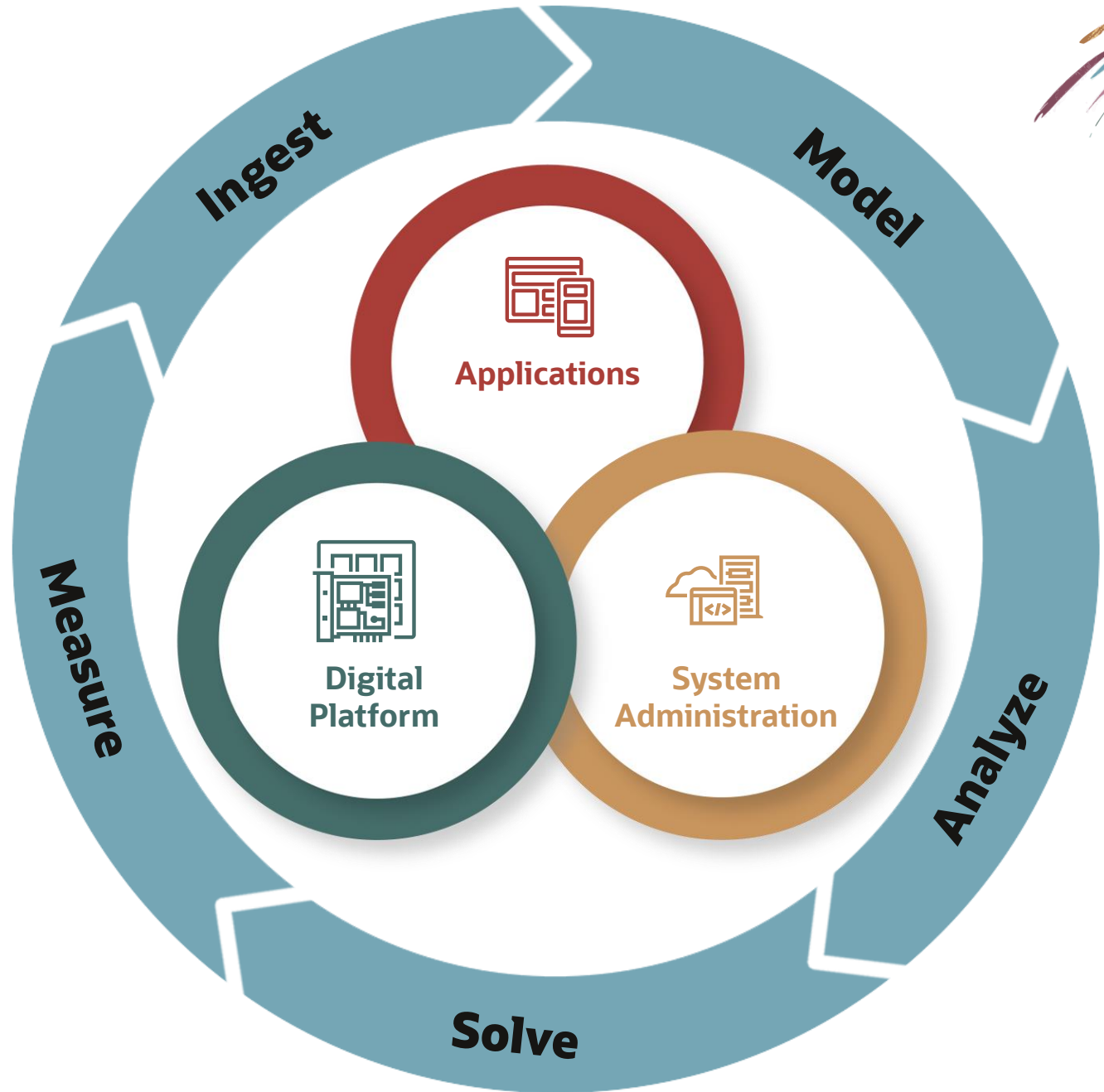
Energy
Usage



Environmental
Reporting



Enterprise Automation





You've been amassing digital gold for years

- Transaction tables
- Ledger tables
- Audit tables
- Workflow history
- ...

ORACLE®
JD Edwards
EnterpriseOne



Purchase Orders P4310

PO Ledger P43041

Workflow P98860

Work With Order Headers Personal Form

Order Number * OP * Branch/Plant *
Supplier

Purchasing Ledger - Work With Purchasing Ledger Personal Form (No Persons)

Order Number * OP * Branch/Plant *
Supplier
Item Number *
Account Number *

Process Task Monitor - Process Task Monitor

Process *
Status *
Start Date From * Thru *
Resource

Description	Resource	Status	Start UTime	End UTime
Financial/Distribution Company	Financial/Distribution Company	Completed	04/11/2024 00:50:58 UTC+00:00	04/11/2024 16:00:59 UTC+00:00
START		Completed	04/11/2024 00:50:59 UTC+00:00	04/11/2024 00:50:59 UTC+00:00
APPROVAL		Approved	04/11/2024 00:50:59 UTC+00:00	04/11/2024 16:00:57 UTC+00:00
RUNREPORT		Completed	04/11/2024 16:00:57 UTC+00:00	04/11/2024 16:00:59 UTC+00:00
APPROVED		Completed	04/11/2024 16:00:59 UTC+00:00	04/11/2024 16:00:59 UTC+00:00
END		Completed	04/11/2024 16:00:59 UTC+00:00	04/11/2024 16:00:59 UTC+00:00
Financial/Distribution Company	Financial/Distribution Company	Error	04/11/2024 16:00:14 UTC+00:00	04/11/2024 16:00:14 UTC+00:00
START		Completed	04/11/2024 16:00:14 UTC+00:00	04/11/2024 16:00:14 UTC+00:00
APPROVAL		Error	04/11/2024 16:00:14 UTC+00:00	04/11/2024 16:00:14 UTC+00:00
APPROVAL		Unopened	04/11/2024 16:00:14 UTC+00:00	04/11/2024 16:00:14 UTC+00:00
Financial/Distribution Company	Financial/Distribution Company	Completed	04/11/2024 16:00:25 UTC+00:00	04/11/2024 16:01:25 UTC+00:00
START		Completed	04/11/2024 16:00:59 UTC+00:00	04/11/2024 16:00:59 UTC+00:00
APPROVAL		Approved	04/11/2024 16:00:59 UTC+00:00	04/11/2024 16:01:25 UTC+00:00



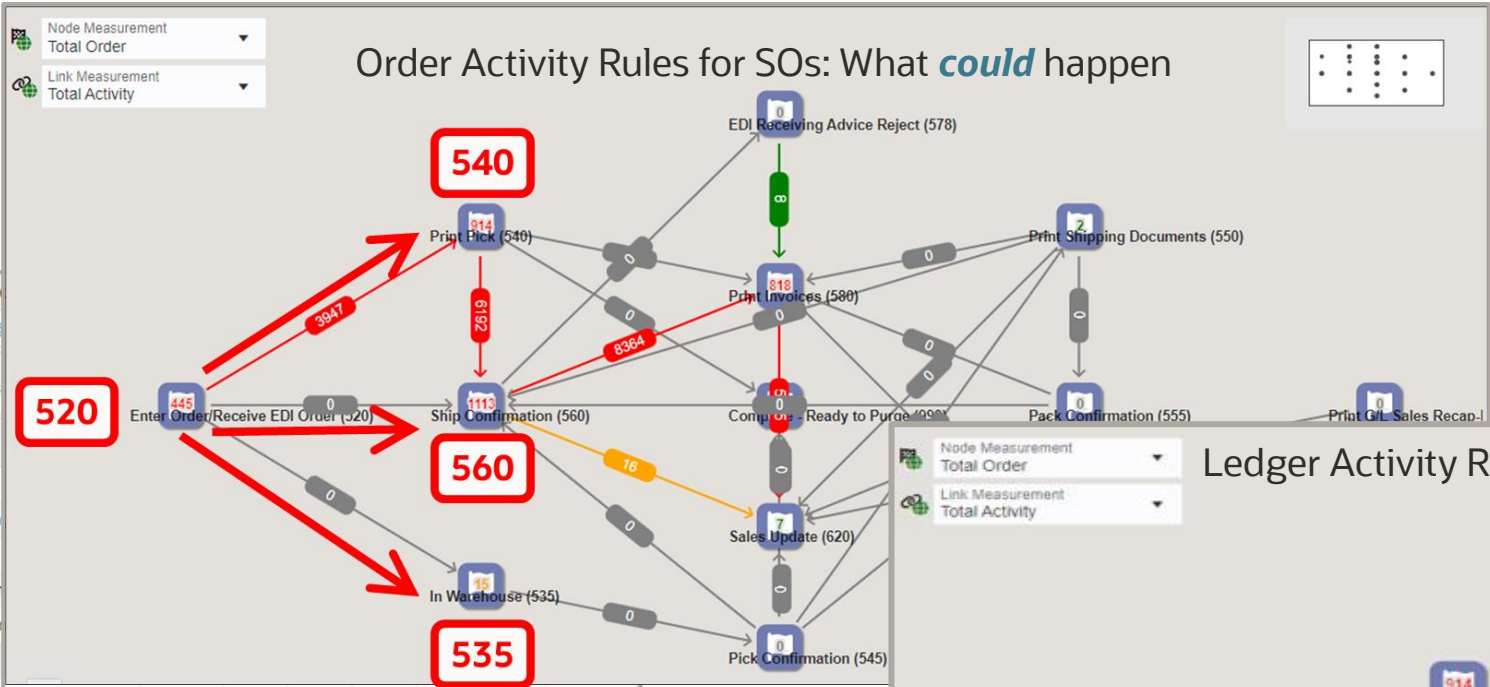
Ingest

Model

Analyze

Solve

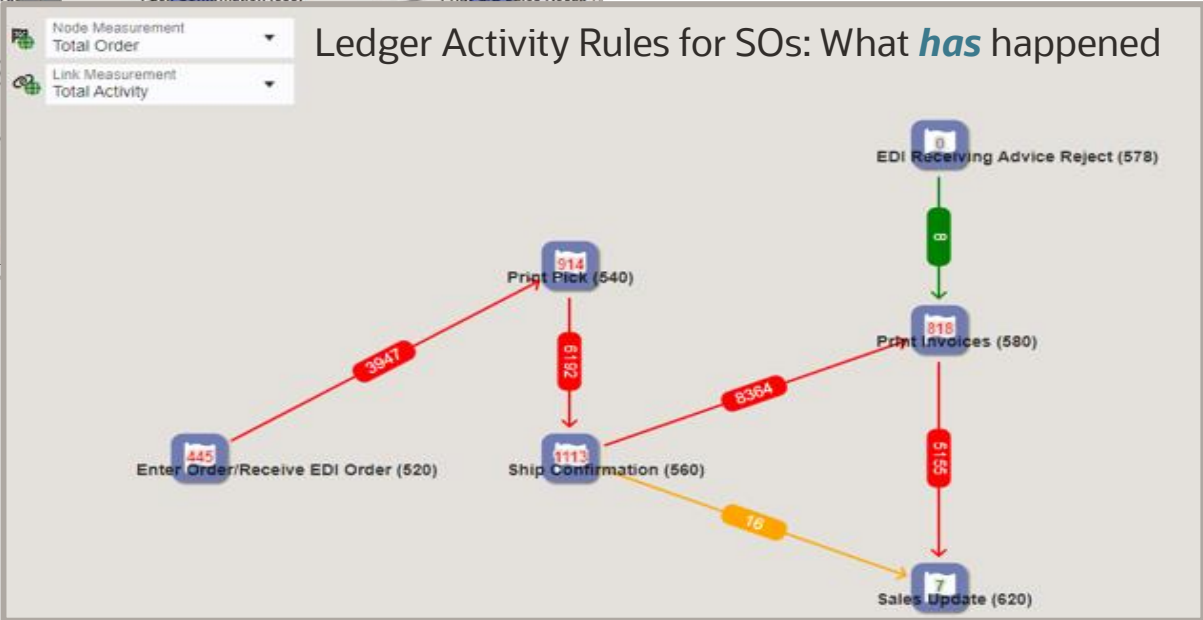
Measure



Order Activity Rules - Work With Order A

Records 1 - 15

SO	S			
Order Type	Line Type	Last Status	Description	
<input type="checkbox"/>	SO	S	520	Enter Sales Order
<input type="checkbox"/>	SO	S	535	In Warehouse Mana
<input type="checkbox"/>	SO	S	540	Print Pickslips
<input type="checkbox"/>	SO	S	545	Picking Confirmation
<input type="checkbox"/>	SO	S	550	Print Shipping Docu
<input type="checkbox"/>	SO	S	555	Pack Confirmation
<input type="checkbox"/>	SO	S	560	Shipment Confirmation
<input type="checkbox"/>	SO	S	575	Billable Freight
<input type="checkbox"/>	SO	S	578	Cycle Billing
<input type="checkbox"/>	SO	S	580	Print Invoices
<input type="checkbox"/>	SO	S	585	Print Interbranch Invoice
<input type="checkbox"/>	SO	S	600	Invoice Journal
<input type="checkbox"/>	SO	S	610	Print G/L Sales Recap-Detail
<input type="checkbox"/>	SO	S	620	Sales Update
<input type="checkbox"/>	SO	S	999	Complete - Ready to Purge



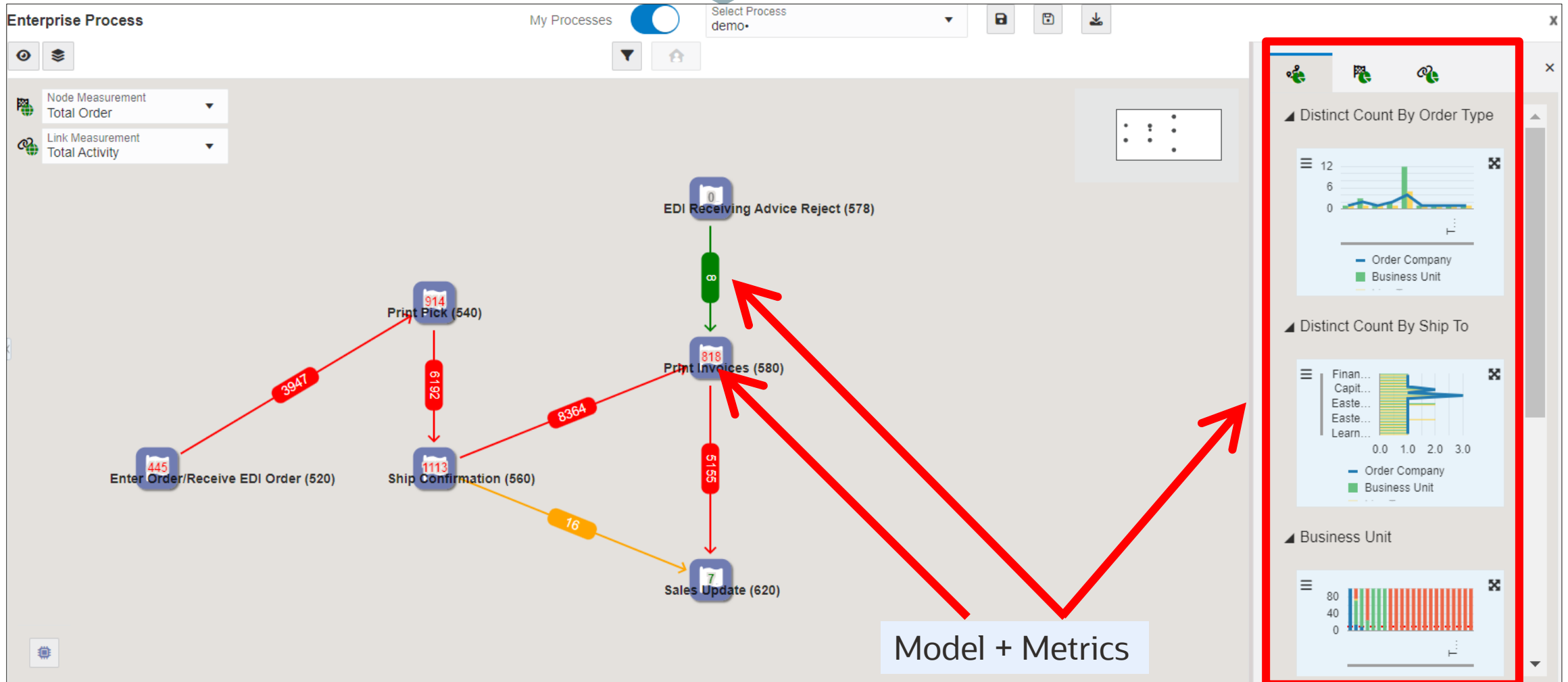
Ingest

Model

Analyze

Solve

Measure



Ingest

Model

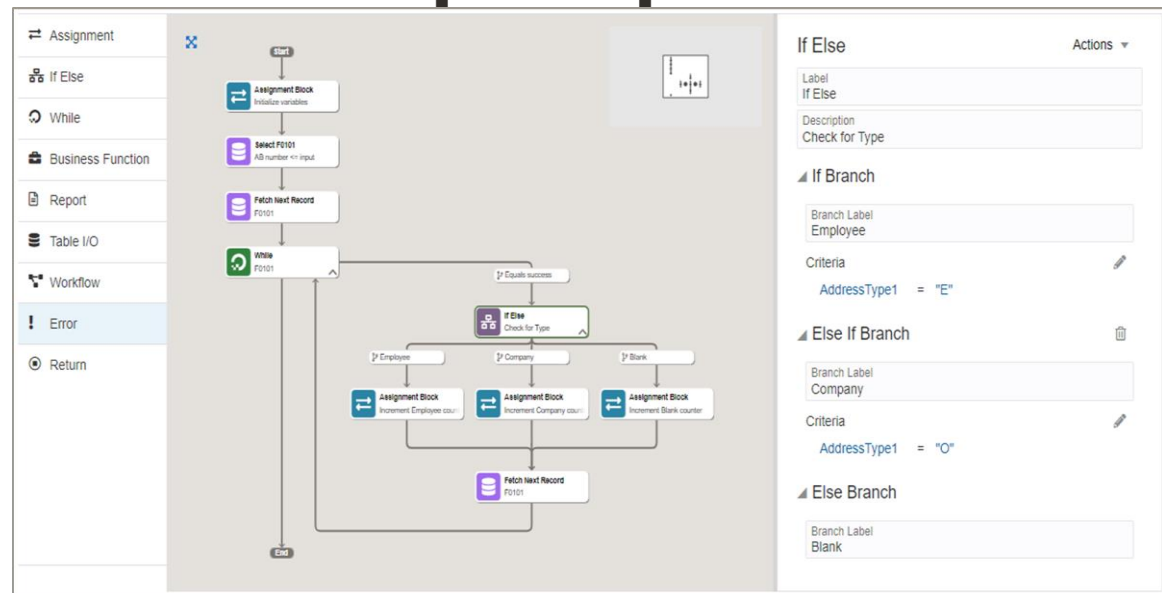
Analyze

Solve

Measure



- Better training?
 - Oracle Guided Learning
- More automation?
 - Orchestrator
 - Workflow
 - Messages/notifications
- Simpler user interface?
 - Web apps; mobile apps
- Better supplier contracts?
- Alternative business models?

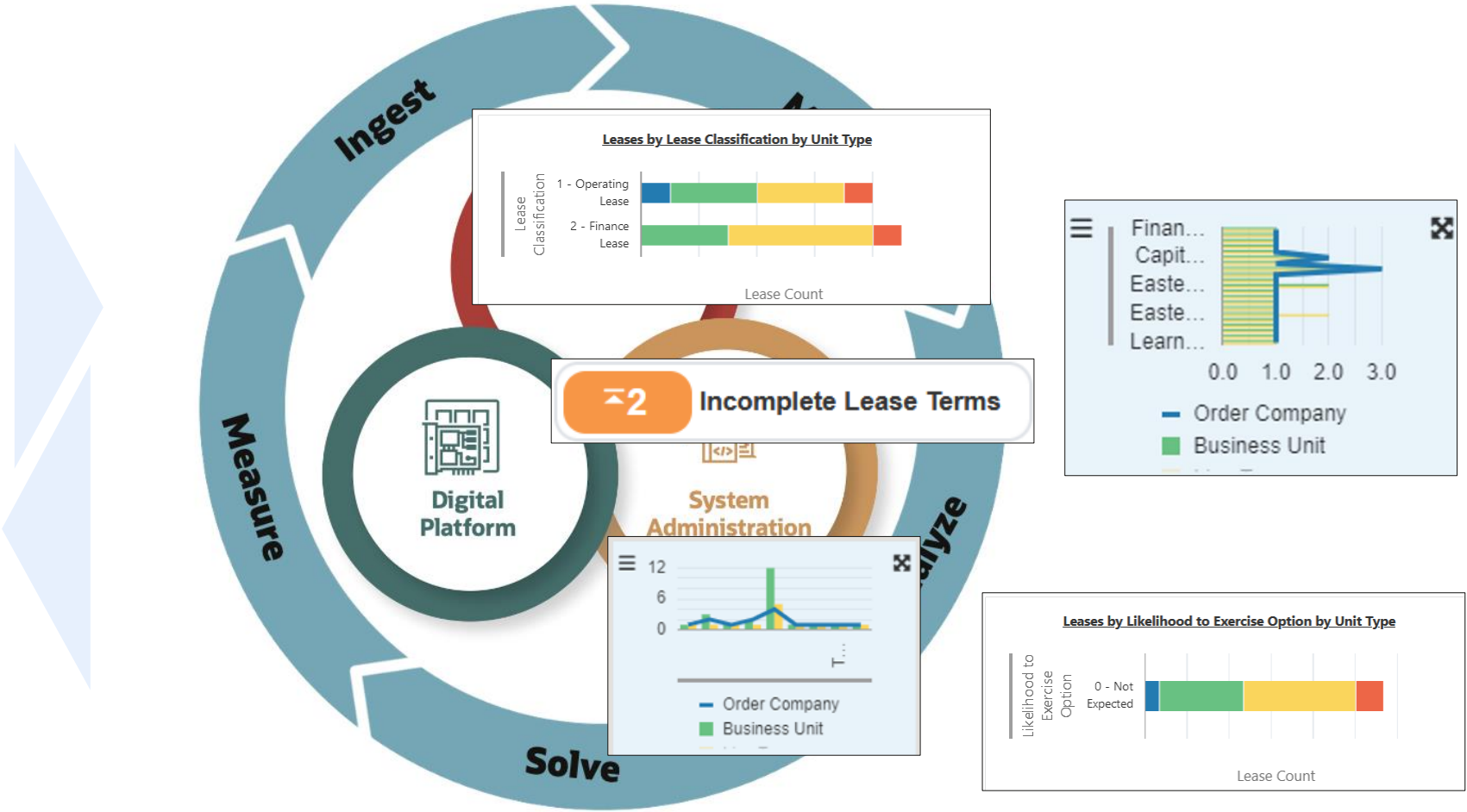


Orchestrator/low code-no code: Faster to develop.
Faster into production. Less expensive.





A cycle of improvement



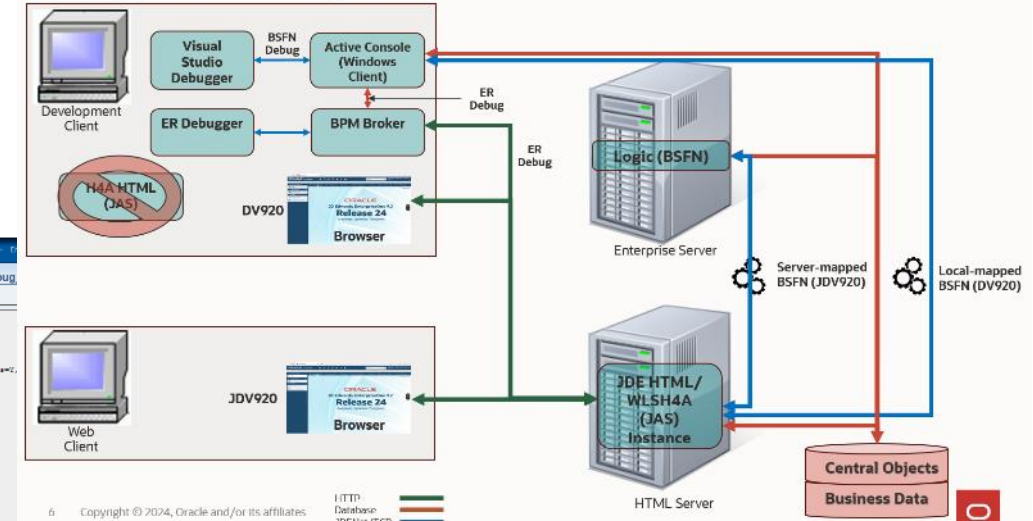
System Administration

Release 25 Lowering the Total Cost of Ownership



- **Sentinel Administration**
 - Simplified Development Client – Centralized Web Tier
 - UDO Altering
 - Optimized Package Full Build
- **Modern Infrastructure**
 - Server Manager: Developer Access
 - Performance Workbench Integration
 - One-Click Provisioning: Open Tofu Support
- **Predictive Patching**
 - Custom Multi-Platform Deliverable Support
 - Web Update Reset Merges
 - Web Planner ESU

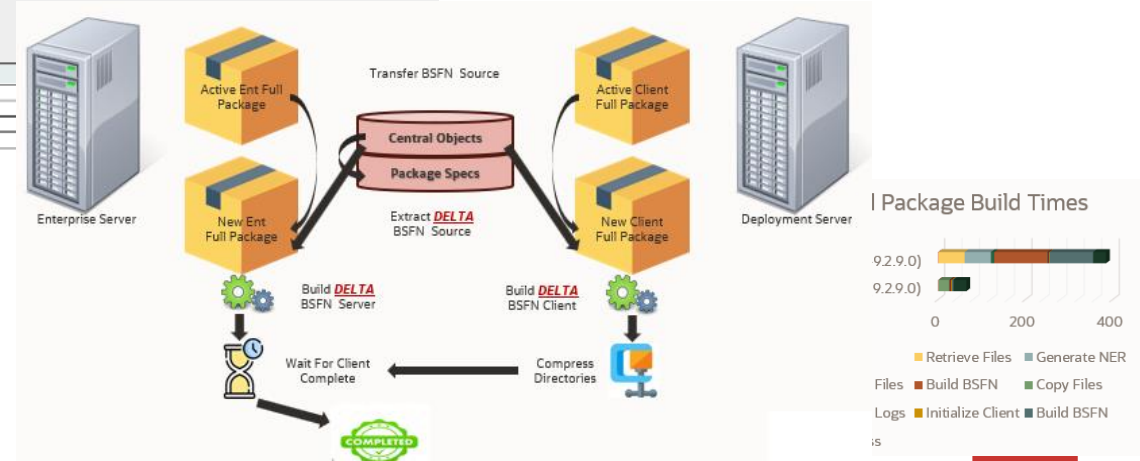
Development Client Simplification - Centralized Web Tier



```

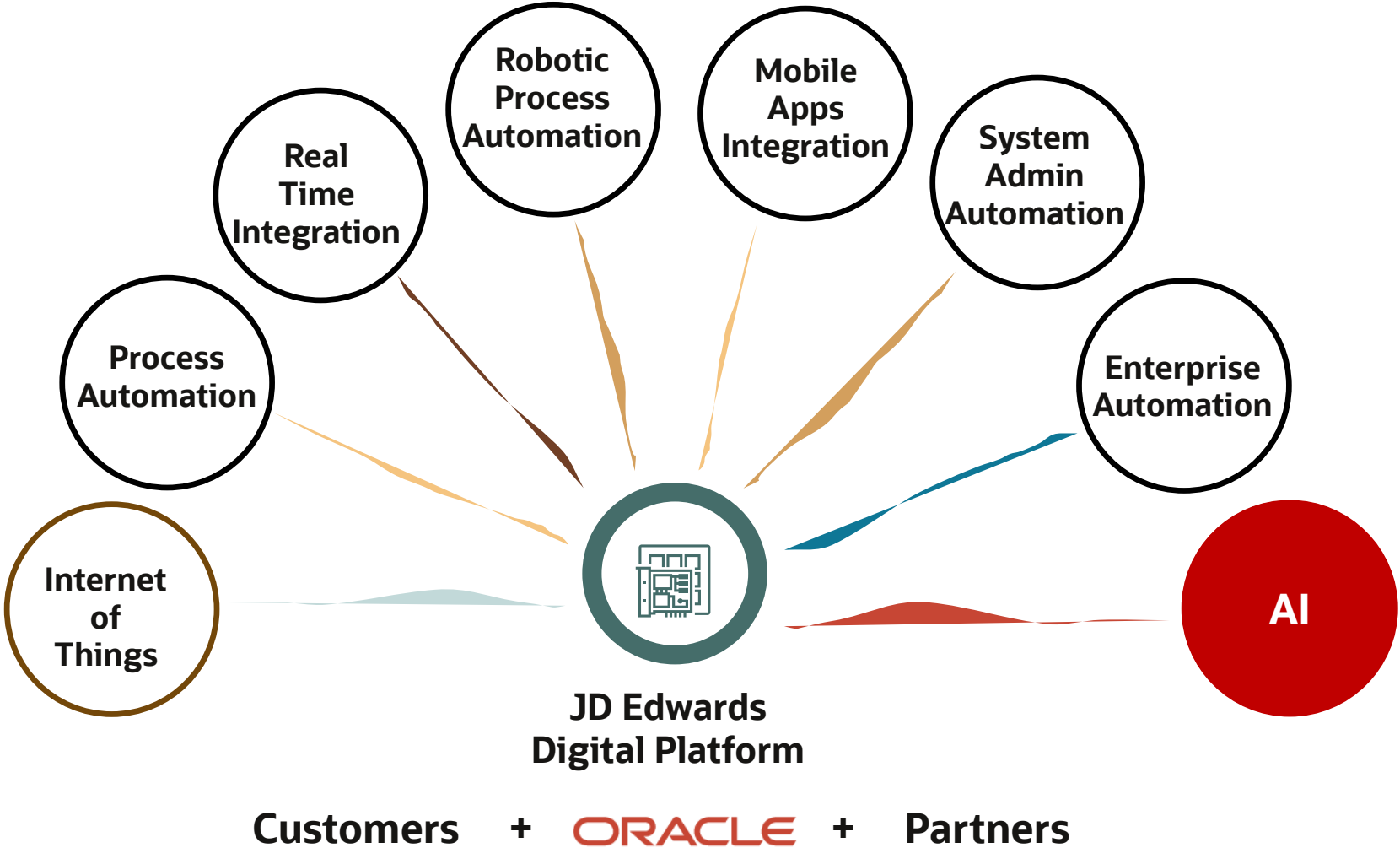
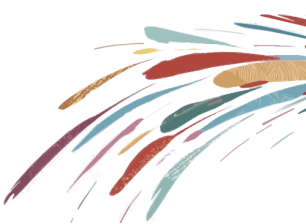
ORACLE JD Edwards EnterpriseOne Server Manager
Performance Workbench [ju01jde920/de_home/SCFHA/perf/results/jdedebug
DunkedOnTheDe

Analysis of file: /u01/jde920/w200/log/jdedebug_4000.log
-----
*** Memory profile data is NOT in this log ***
DE Version: 92.000000 - Feb 2024
Package Level=0, LogAPI=0, CleanupPackageLevel=0, CleanupPackage=00000000, ShowTableNames=0
** NOTE: For suspended or client log files, these timings may not be accurate
**   COTM logging data may be incomplete in truncated logs
** Total time in log file: 4081.888000 seconds
** Total time in Level 1 BSFN: 10.074200 seconds (0.0 % of total)
** Total % of log over level 1 BSFN: 0
** Total COTM calls: 1170
** Max call depth: 0
** These were 1 TRACES:
1. 4080/4080
2. 4080/4080
3. 4080/4080
4. 4080/4080
5. 4080/4080
6. 4080/4080
7. 4080/4080
8. 4080/4080
9. 4080/4080
10. 4080/4080
** - Indicates this BSFN has calls at level 1
** - Indicates this BSFN has no child calls - all time is SELF time
Go to BSFN Stack Trace section
Go to Table section
Go to Table Timing section
Go to COTM section
Go to COTM Business Function section
BSFN counts:
#/* BSFN name
# AddressBookName@DT
# @Tran@Doc@en@P@D@y
# @Doc@Ad@Doc@Table
# @Validation
    
```

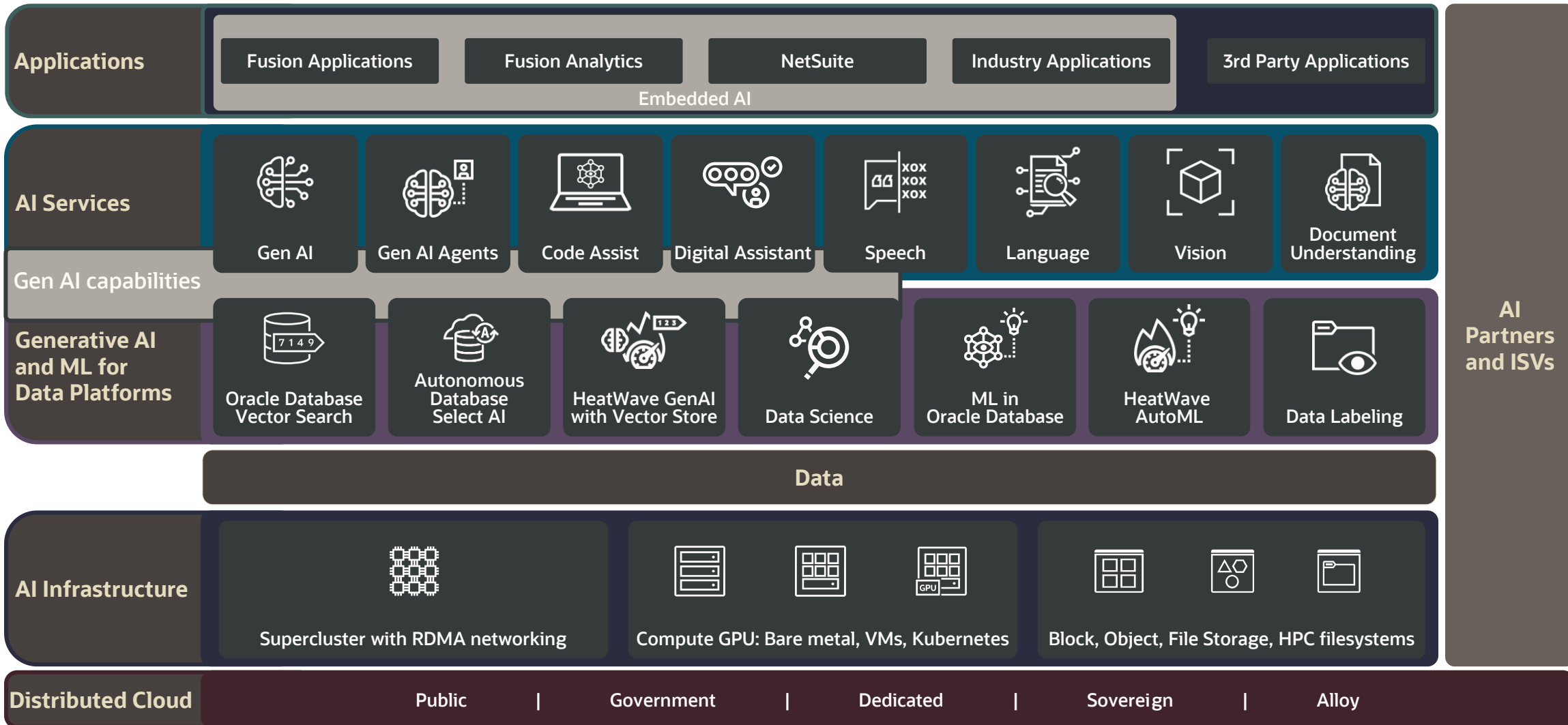


The Evolution of the JD Edwards Digital Platform

From IoT to AI



The Oracle AI Stack



Demystifying AI



Predictive AI

- Algorithms that learn from data
- Trained models make predictions or decisions

Capabilities

- Analytics
- Document Understanding

Examples

- Forecast Analysis
- Extract information from physical receipts



Generative AI

- Creates new content or data
- Utilizes techniques like Large Language Models

Capabilities

- Natural Language Processing
- Content Generation

Examples

- Text Summarization
- Create text prompts in Oracle Digital Assistant



Release 25 – Automate, Optimize, and Transform

Release 25 Driving Application Optimization



Release 24 November 2023

- Enterprise Automation: Requisition to Receipt
- Standalone Price Check in Procurement
- Volume Based Buying Recommendations in Procurement
- Ability to View Details of Vouchers Associated with Purchase Orders from Account Ledger Program
- Improved Asset Cost Analysis
- Automated Safety Stock Population
- Allow Inventory Locations to be Put on Hold
- Enterprise Automation: Shipment to Dispatch
- OCI AI/ML Accelerator
- Usability Enhancements for Resource Assignments
- JD Edwards Statement of Direction for Sustainability Framework
- Blend Lot/Track/Trace Auditing
- Workflow Monitor
- Task Tracking
- Notification Reminders
- Output Stream Access for Orchestrations
- User-Defined Delimiter for Orchestrator Output to CSV
- Prebuilt Workflow Data Structures
- Update Manager: Application Update Support via Web Client
- Update Manager: Batch Update via Web Client
- Update Manager: Impact Analysis Dashboard
- Update Manager: Webify UDC & Glossary Utility
- Server Manager: Centralized Configuration for Enterprise and Integration Servers
- Web OMW: Business View Design Tool
- Web OMW: Object Promote to Package
- Simplified Management of User Logging
- ...

Release 24 January/May/June 2024

- Financials Year End 2023
- US, Canada Payroll Year End 2023
- Order Preparation Day and Delivery Date Preference Based on Workday Calendar
- Weigh Tags Processing Usability Enhancement
- Sales VAT File to Peru Tax Authority
- Enterprise Automation: Order to Cash
- Enterprise Automation for Procurement: Analyze Metrics
- Production Lot/Serial Number and Location Automation
- Brazil – Support for PIX Payment Format
- Ability to Update Subledger with Building Number During G/L Post for Recurring Billing
- Display Reason Code for Voided Transactions in Tenant Ledger Inquiry Program for Manual Billing
- Return Connector Response as a Variable
- Ascending or Descending Thresholds on Watchlists
- Allow Reordering of Data Request and Grid Request Data Outputs
- Reorder Orchestration Inputs
- My Workflow Monitor
- Authentication for OCI Services
- Orchestrator Variable for Report Queue
- View PDF Attachments with a Single Click
- View Attachments in Composite Application Framework
- Update Manager: UDO Deployment
- Server Manager: Enterprise Server Component Change Retain External Files
- Server Manager – R24 Additional APIs
- User Access and Application Usage Tracking
- Improved Automatic Serialized Object Generation
- ...

Release 25 November 2024

- Ability to Assign Delinquency Fees to Business Unit of Invoice
- Increased Range of Account IDs
- Enterprise Automation: Order to Cash Integrated with Warehouse (E1 Page)
- Enterprise Automation: Order to Cash Process Model Template
- Enterprise Automation: Procure to Pay Integrated with Warehouse (E1 Page)
- Enterprise Automation: Procure to Pay Process Model Template
- Two-Way Voucher Match Automation
- License Plate Workbench Usability Enhancements
- Real Estate – Ability to Edit Tax Information in Manual Billing Program
- Sustainability Foundation and Scope 1 Stationary Emissions
- Enterprise Process Modeler
- Return System Values in Orchestration Outputs and Assertions
- Call an Orchestration from a Row or Form Exit
- List of Criteria Variables into Orchestration Rules
- Text and Images on EnterpriseOne Pages
- Enhanced Data Access Driver for Multiple Environments
- Optimized Full Package Build Performance
- Development Client Simplification – HTML Server
- Server Manager – Performance Workbench
- JD Edwards Update Manager: Reset Merges of Updates
- Package Deployment Through Orchestration
- UDO Altering
- Real-Time Access to Media Objects Stored in External File Store
- ...



Future EnterpriseOne 9.2 Enhancements

Highlights of **Planned** and **Research** Features

Planned

Planned

Applications

- Sustainability Framework: Capture and Store Mobile Combustion Data
- Accurate Tolerance Check in Partial Voucher Match
- EU – Electronic Invoicing Invoice Enrichment (UBM 2.1 Extension)
- Brazil Tax Reform Changes
- Enterprise Automation for Manufacturing: Production Order to Cost Update (E1 Page)
- Enterprise Automation: Enhanced Procure to Pay Process Model Template

Digital Platform

- Translatable Orchestration Input Labels
- Unique Shortcuts for Task Tracking Actions in Message Center
- Comparative Criteria on Queries and Watchlists
- Comparative Criteria on Form Requests, Data Requests, Data Service, and Logic Extensions
- Watchlists in EnterpriseOne Page Connectors
- Allowed Domains and Attributes for Content Security Policy
- EnterpriseOne Widgets
- Warning When Editing Shared Orchestrator Components

System Administration

- Microsoft SQL Server Clustering Support
- Web OMW: Table Operation Support
- Web Package Build: Quick Access to Log and Output Files
- Web Scheduler Application
- Synchronized Cache Clear Between Enterprise Server and HTML Server
- Automatic Negotiation of TLS for Secure Communication
- Translate Report Name Based on Language Preferences

Research

Applications

- Enterprise Automation: Preventative Maintenance Process Model Template
- Enterprise Automation: Enhanced Order to Cash Process Model Template
- Warehouse Replenishment Enhancements
- Manual Replenishment of Held Lots
- Maintain Agreement Relationship/Pricing with Future Committed Lines
- European Union – Payment Reconciliation (CAMT.053 Standard)

Digital Platform

- Conditional Launch of an Orchestration, Notification, or Logic Extension from a Form Extension
- Rich Formatting of Workflow Messages
- Enterprise Automation Workbench
- Enterprise Automation: Process Modeler Enhancements
- Notifications on EnterpriseOne Page Tiles
- Oracle Guided Learning for Orchestrator Studio
- Default Values for Fields on Personal Forms

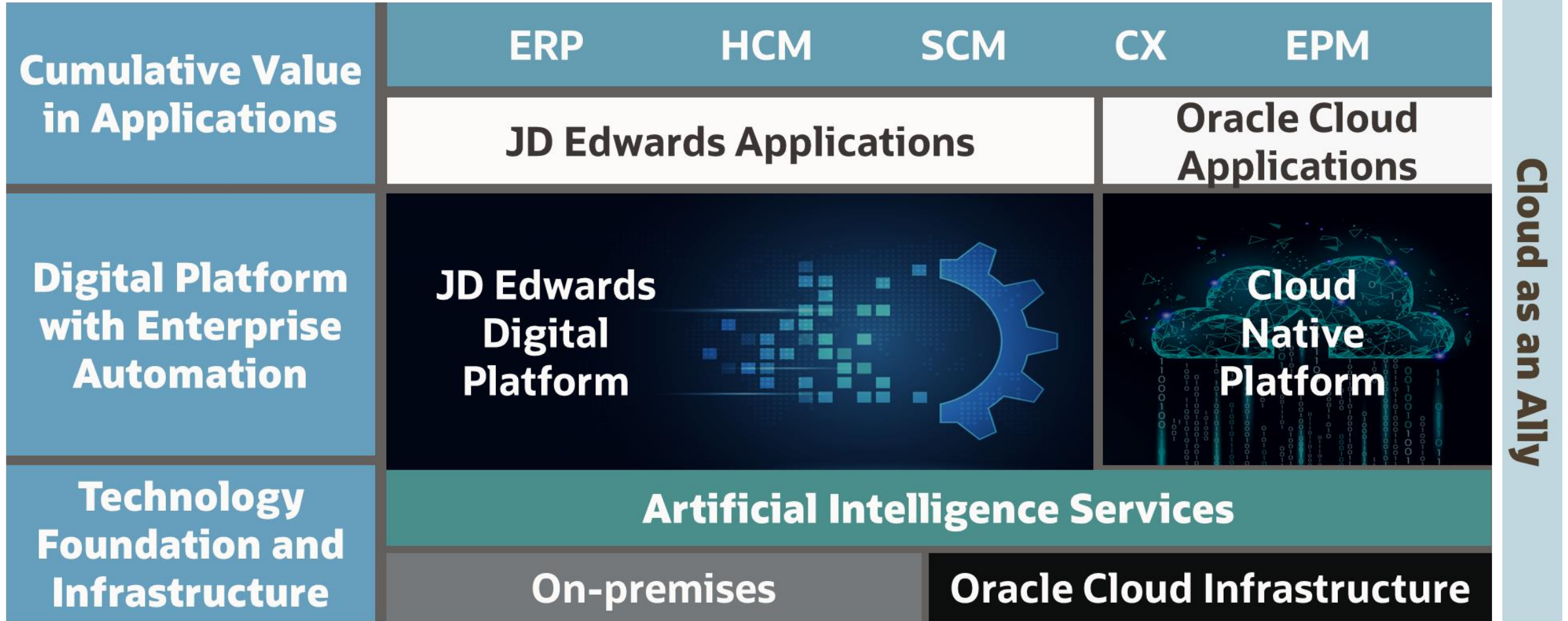
System Administration

- JDE Update Manager: Application Update Analyzer
- JDE Update Manager: Cross Reference & Decustomizer Recommendations
- UDO Tracking
- UDO Compare Tool
- Session Failover for HTML Server on WLS Cluster
- JDE Oracle Analytic Accelerator
- OCI Adoption for Stack Monitoring & Log Analytics
- Batch Queue Manager
- Development Client Installation via Server Manager



JD Edwards Solution Architecture

Release 25 and Beyond




Cloud as an Ally






LEARNJDE Applications Tools and Technology Resources 🔍 @

Announcing JD Edwards EnterpriseOne **Release 25**
October 2024

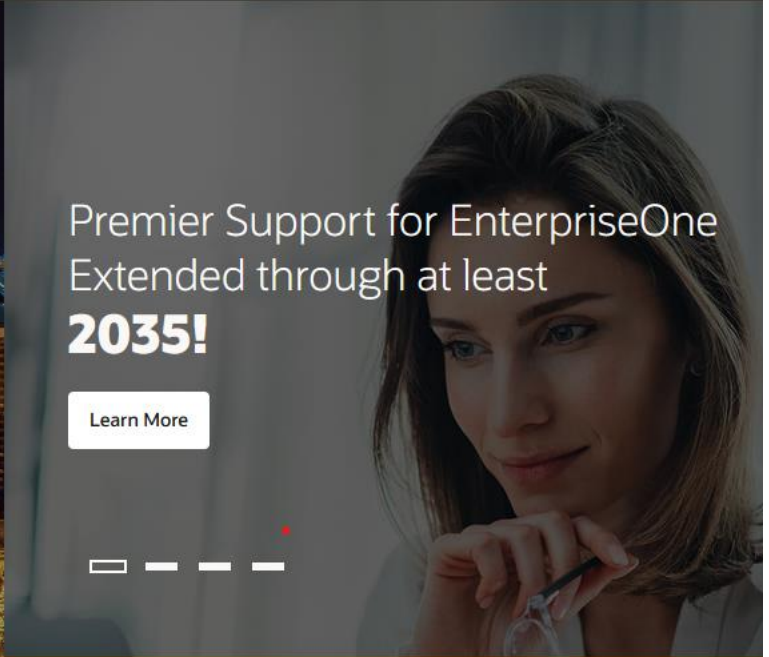




Register for **BLUEPRINT 4D**
June 9 - June 13, 2025
Las Vegas, NV
Share your expertise, expand your reach and build connections



Premier Support for EnterpriseOne Extended through at least **2035!**

[Learn More](#)



 Roadmap  Announcements  Product Catalog  JDE and SaaS  JDE Documentation



The JDE Connection

**Listen to The JDE
Connection at Quest
Oracle Community**

<https://bit.ly/jdeconnection>



Stay Connected!



Quest Oracle Community



The JDE Connection



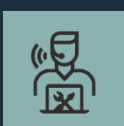
LearnJDE



JD Edwards Professionals
JD Edwards Partner Group



OracleJDEdwards



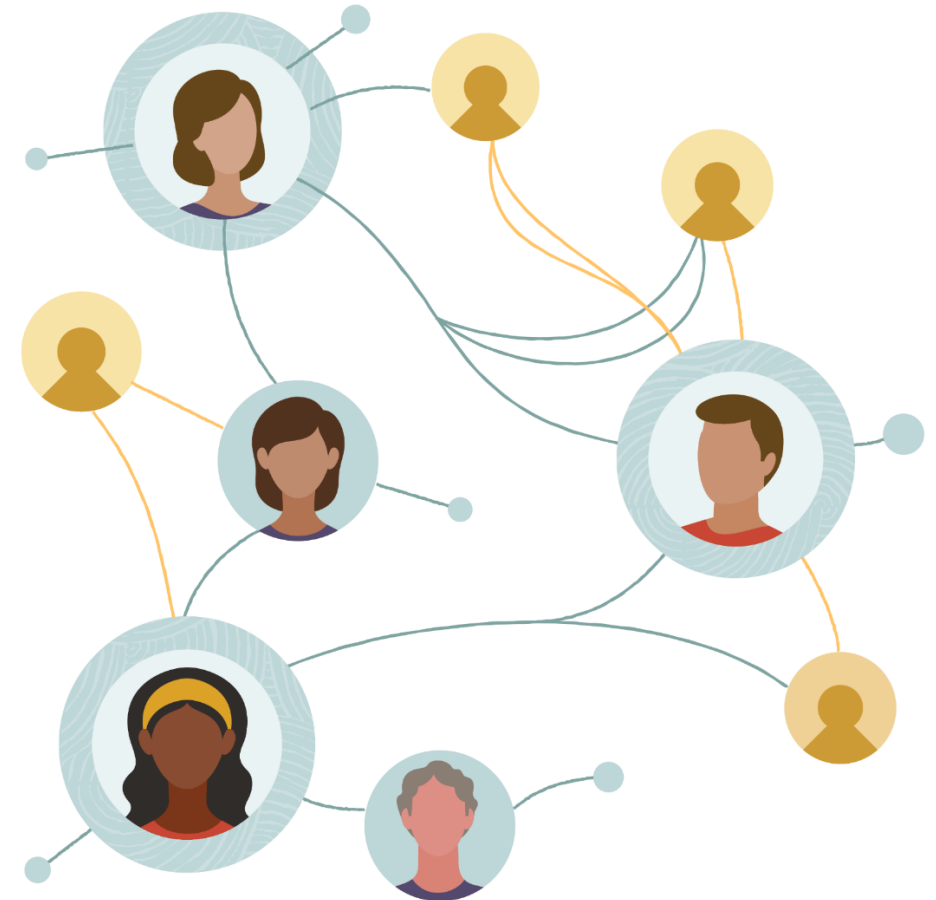
My Oracle Support



Oracle JD Edwards



OracleJDEdwards





**Together, we will relentlessly
improve and innovate.**

**Together, we will optimize
and transform how you use
Oracle applications and
technologies.**