

etagis APS

production management – powered by etagis

- production management: software and consulting
- founded: 2005
- sites: Kerpen and Villingen-Schwenningen
- >100 installations
- independent (own software development, no preferred ERP system)
- Partner concept
- international customers and partners

AKTUELLE INFORMATIONEN

11.02.2010 Strategische Partnerschaft IVS + etagis
Mit dem etagis Auftragszentrum wurde ein innovatives echtzeitfähiges PPS-MES-System entwickelt, welches vollständig in ERP-Systeme (z.B. ABAS-ERP) integriert und online mit den ZEUS® BDE und MDE...

21.09.2009 etagis auf abas Kundentag

09.06.2009 etagis jetzt auch auf Spanisch

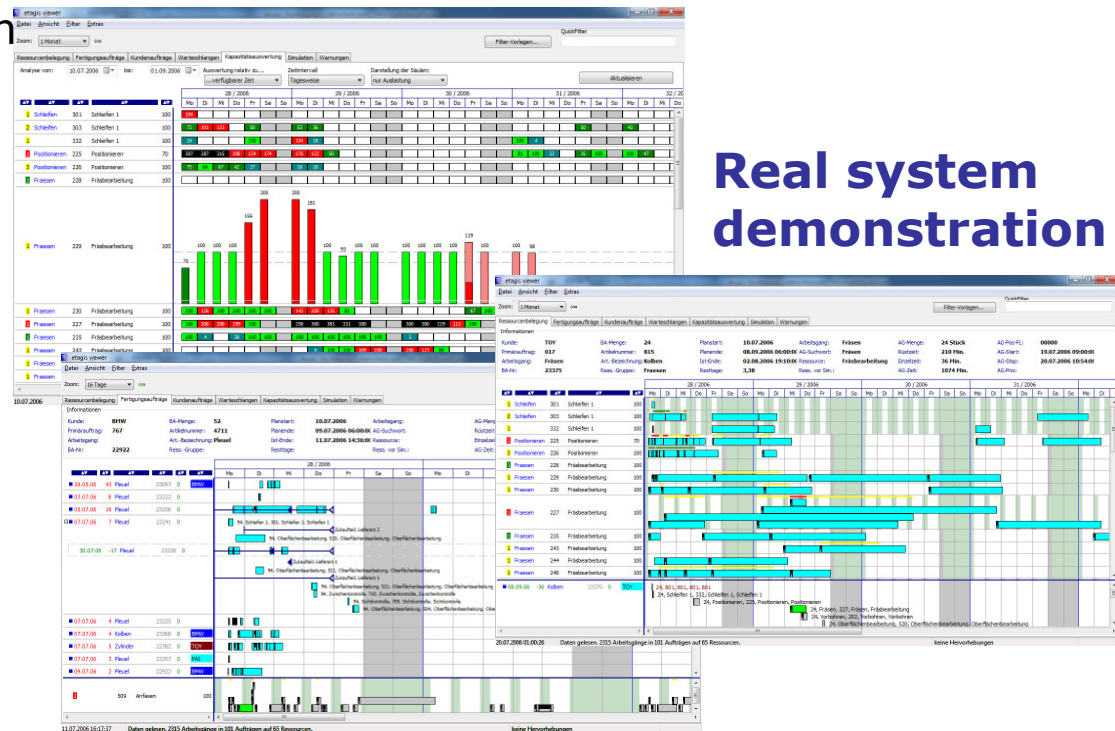
05.05.2009 Präsentation der Integration in Microsoft Dynamics NAV am 19.5.

WILLKOMMEN BEI ETAGIS
Die etagis GmbH mit Stammsitz in Kerpen und Niederlassung in Villingen-Schwenningen ist Lösungsanbieter im Produktionsmanagement. Unsere Kernaufgabe ist die organisatorische und technische Beratung produzierender Unternehmen in der Produktionsplanung und -steuerung (PPS) sowie die Softwareentwicklung.
Vorrangiges Ziel: www.etagis.de isierungs-, Simulations- und Optimierungsunterstützen sowie Handlungsalternativen unterstützen sowie echtzeitfähiges PPS bzw. MES-System entwickelt, das vollständig in bestehende ERP-Systeme integriert ist.
Da eine Software nur so gut sein kann wie die Prozesse, die durch sie unterstützt werden, haben wir uns auf die Organisations- und Prozessgestaltung in der operativen Auftragsabwicklungskette spezialisiert. Diese Aufgabe reicht von der Konzeption und Einführung produktionsrelevanter Strukturen im ERP-System bis hin zur Überprüfung und Gestaltung der Aufbau- und Ablauforganisation.

transparency and reliability in production planning and scheduling

Maintain an overview through visualization and simulation

- **High level of transparency** in planning against limited capacity → **making the right decision**
- **Fast reaction** to changing requirements and making necessary decisions
- Department spanning **communication** through visualization
- Forecast and optimization of different **key figures**

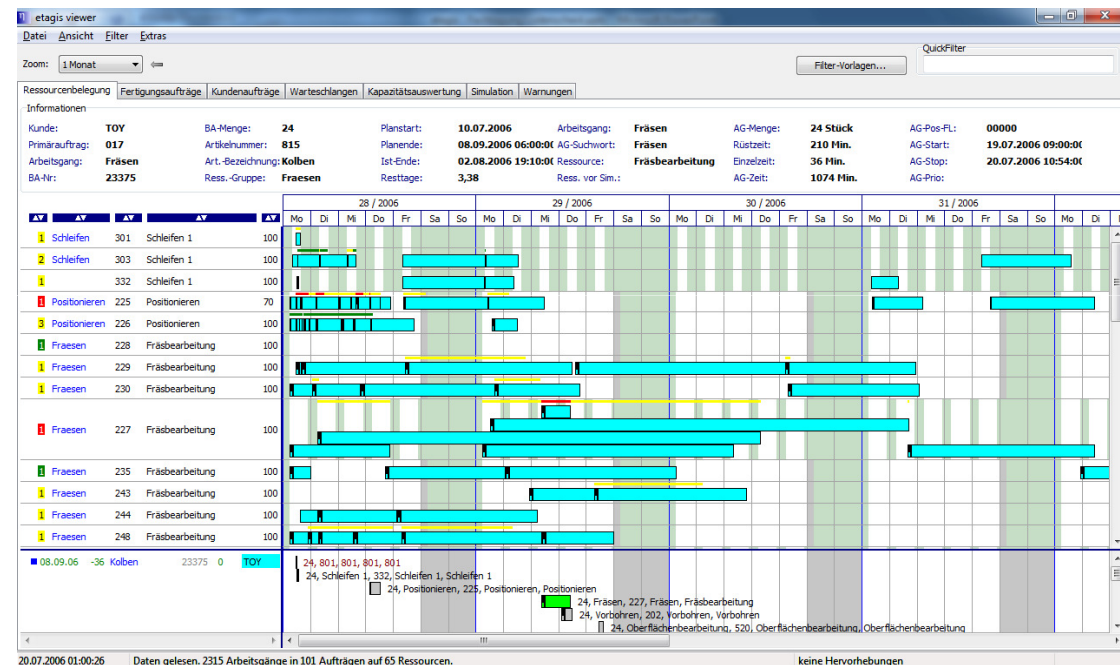


Real system demonstration

**Discuss what you see!
Experiment with your data!**

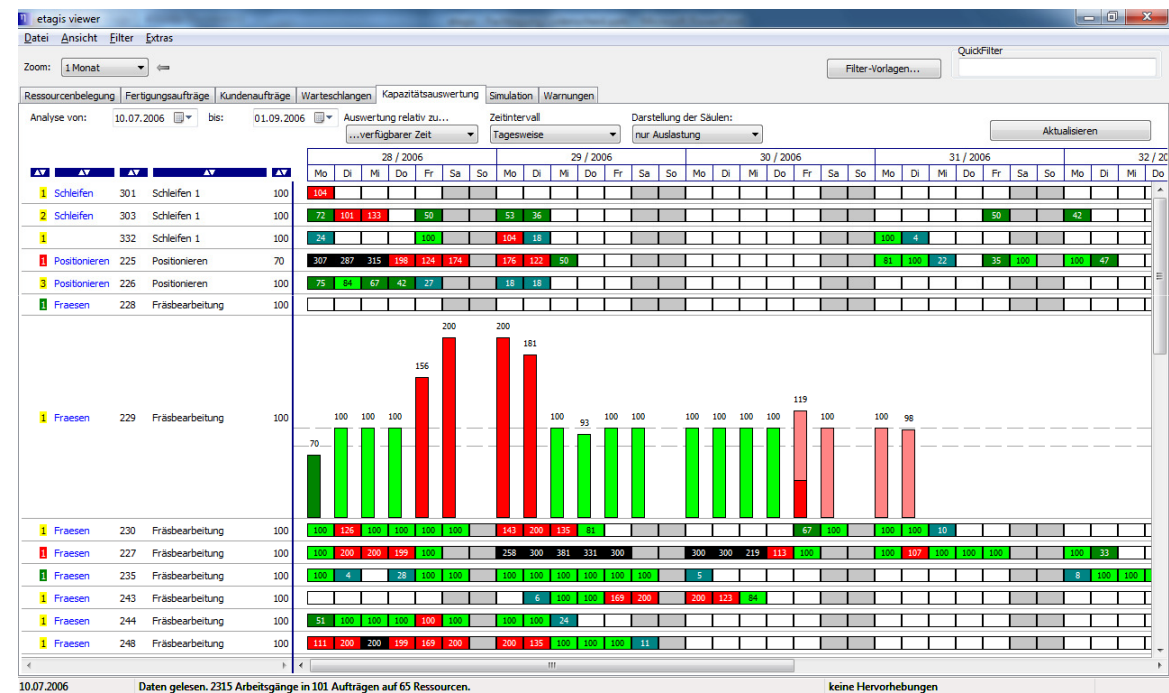
Resources view - Overview of the production load

- Display of the planned series of operations per resource
- Display of "conflicts" (e.g. duplicate reservations)
- Available working time respective to the shift module
- Manual moving
- Direct link to abas ERP by right-clicking the mouse
- Zoom functions
- Restriction of resources (e.g. a department)
- Loading and scheduling lists
- Split view for an overview of the complete sales order network



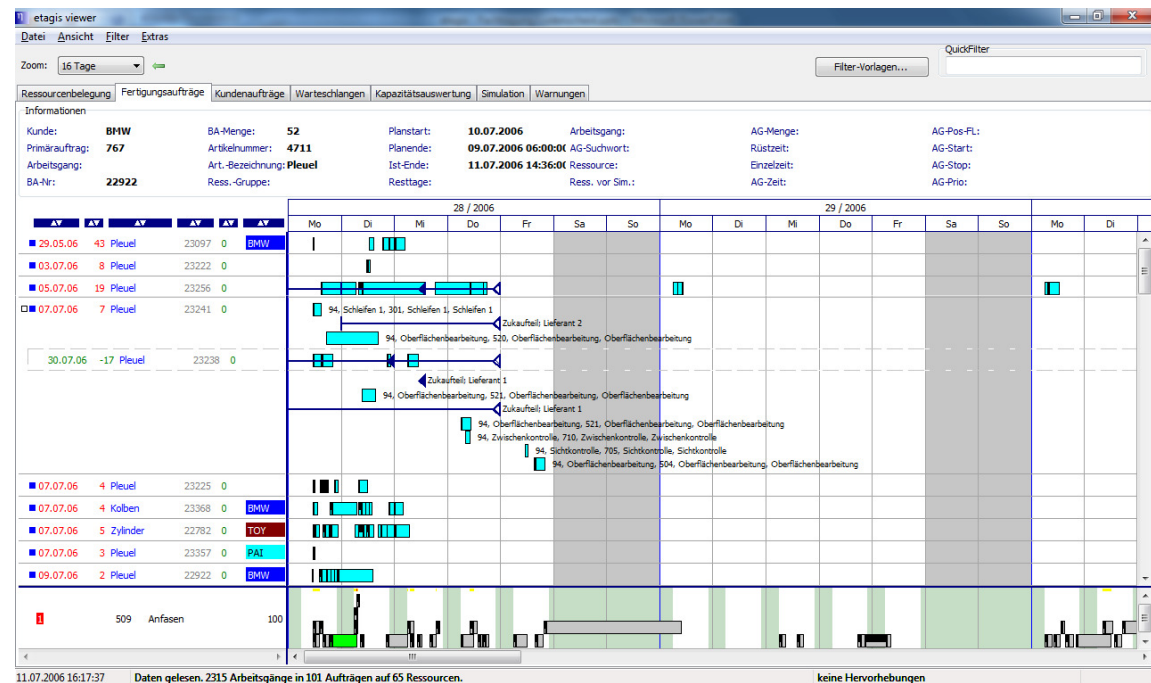
Capacity valuation - Overview of the production load

- Capacity utilization display in comparison to available capacity
- Different details: daily, weekly or monthly capacity utilization
- Faster overview through "traffic lights function"
- Detailed information by expanding a row



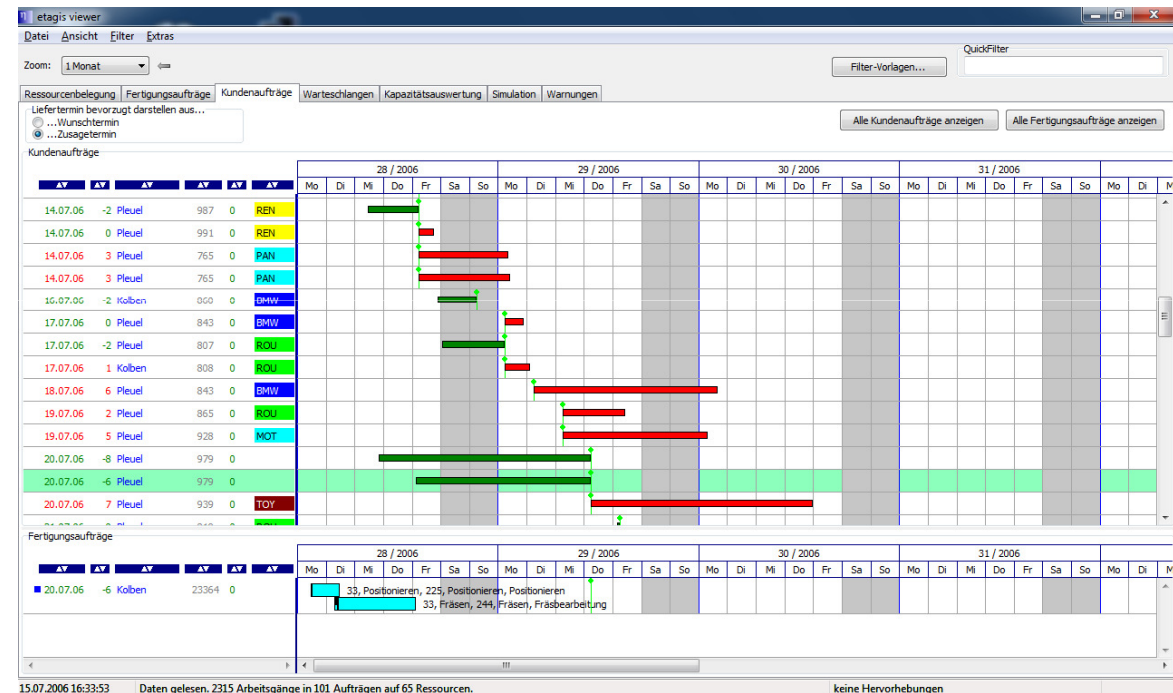
Production order view - The overview for the planner

- Display of sales order relations - complete procurement status
- Consideration of work order suggestions, purchasing activities, subcontracting and relocation over all levels right up to the customer sales order
- Checking the delivery deadline (colored display)



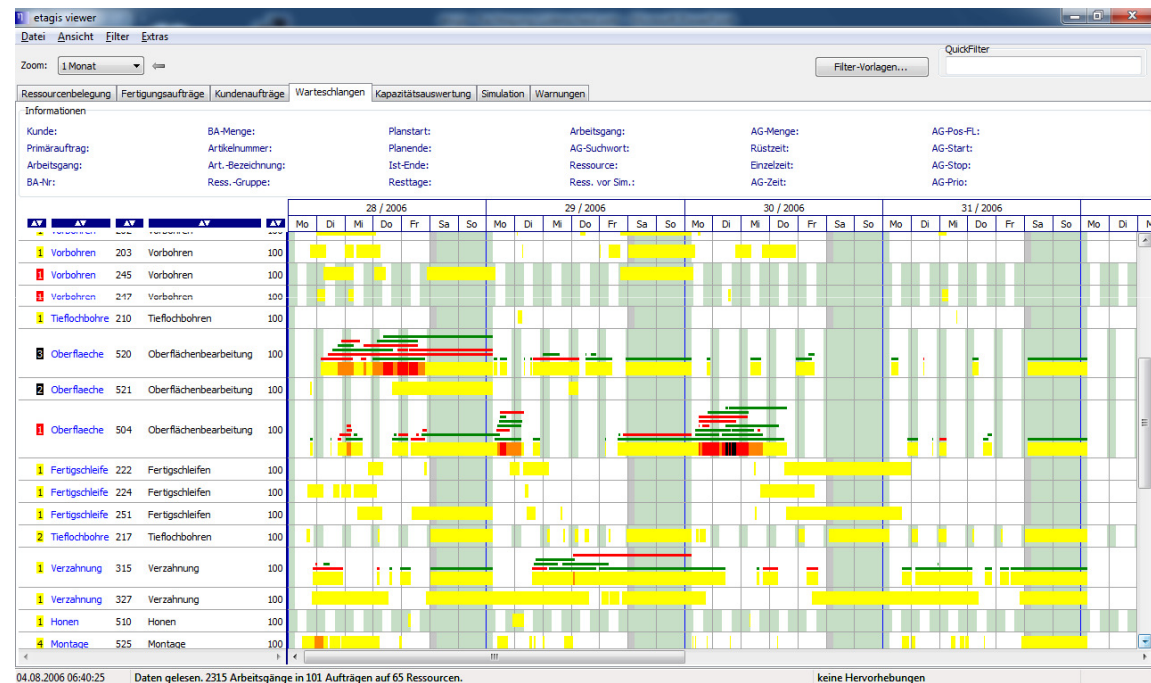
Customer sales order view - The overview for sales

- In the customer sales order view you can see if targets have been reached and the outstanding processes are displayed.
- Variance display on target delivery date
- Link to the production sales orders -> immediate cause analysis possible
- Status information can also be seen immediately by sales without a query in the work preparation or planning



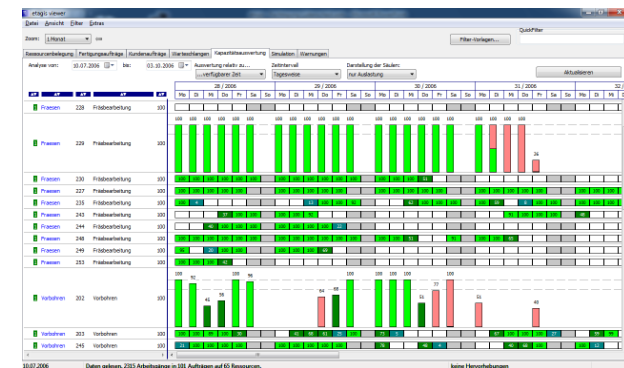
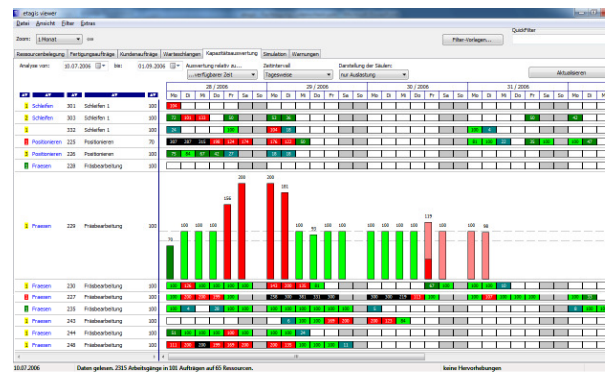
Bottleneck view - Early recognition of capacity requirement

- Queue time of sales orders per resource
- The darker the bar, the more sales orders are in the queue
- The bottlenecks "sway/move" with time so that it can be decided in good time where extra capacity would be required
- The color of the bars shows if a delivery due date can be met or not. In this way it can be estimated if additional shifts are required or if everything is ok despite the bottleneck



Planning against limited capacity

- Consideration of limited capacity
- Consideration of shift schedules
- Frozen zone (for purely manual planning)
- Fixation of sales orders
- Formation of packages for set-up optimization
- Consideration of diverse priority characteristics
- Synchronization of sales orders according to delivery due date; lead time minimization



Diese Funktion ist nur in der Professional Version verfügbar

Service characteristics of integrated interactive simulation

- **Interactive**, completely **integrated simulation** with response times of a few seconds (planning against limited capacities)
- Consideration of **procurement side** (purchase orders and purchase order suggestions) and **sales side** (customer sales orders)
- **Setup optimization** integrated in the standard and is flexibly configurable
- **Frozen zone** per resource and **fixation** of sales orders
- Display and consideration of **transport and wait times**
- **Prioritization** of sales orders (interactive)
- Consideration of **alternative resources**
- Extensive, freely configurable **export options** (e.g. files readable in Excel)
- **Configurable views**
- Transfer, configurable display and filtering of individual information (freely defined supplementary fields in the database)
- Configurable expressions, creation of **machine loading and scheduling lists**

Use - Transparency leads to secure decisions

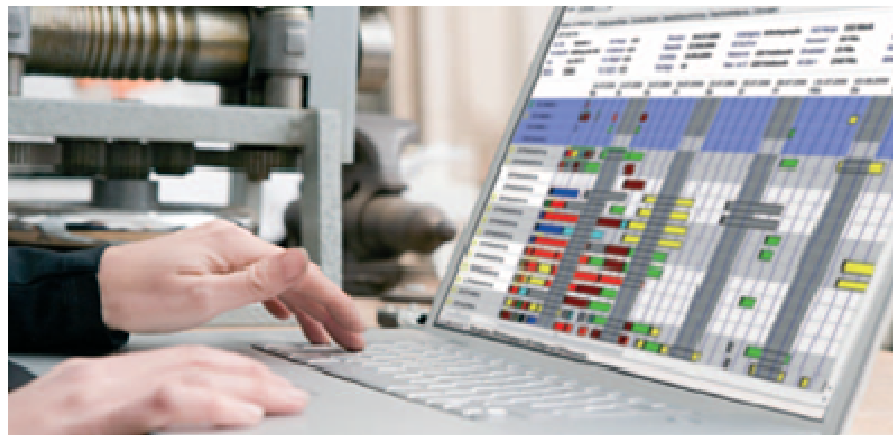
In good times ...

- Valid delivery dates
- Early recognition of bottlenecks, delivery problems
- Setup optimization
- Vendor management (also subcontracting)
- Stable processes through common "production strategy" (rules)
- The "correct" information for each role instead of information overload
- Sales order synchronization, warehouse stock management
- Higher level of productivity

... and in bad

- Recognizing over-capacity
- Employee service assignment planning
- Cleaning-up data
- "Good time" for process implementation
- More efficient sales order processing
- Higher level of productivity (e.g. setup optimization)
- Higher level of effectivity (e.g. which resources are possibly not used, checking the subcontracting)
- Recognition of optimization potential (long setup times, bad level of service, stamping discipline)

etagis APS



**Info-Film : http://etagis.de/files/etagis_en.zip
info@etagis.de
www.etagis.de**