

ABAS PM IMPROVE YOUR PROJECT PLANNING

Project-based work is an integral part of the daily work routine in many small and medium-sized businesses. Whether for a sales order or an internal project: resources must be planned, budgets set, dates coordinated and costs checked – often across different departments or even throughout the entire company.

abas PM is a powerful project management add-on fully integrated in abas ERP with a wide range of planning, processing, and control functions – for traditional single project planning as well as for managing challenging multi-projects.

OPTIMALLY INTEGRATED

abas PM is seamlessly integrated in abas ERP, which is particularly useful in the function areas "CRM/Sales", "Production", "Purchasing", "Materials management" and "Cost accounting". Furthermore, the add-on allows the maintenance of project files in the context of abas DMS. abas PM is suitable for comprehensive implementation in a company and integrates all important departments in the project process.

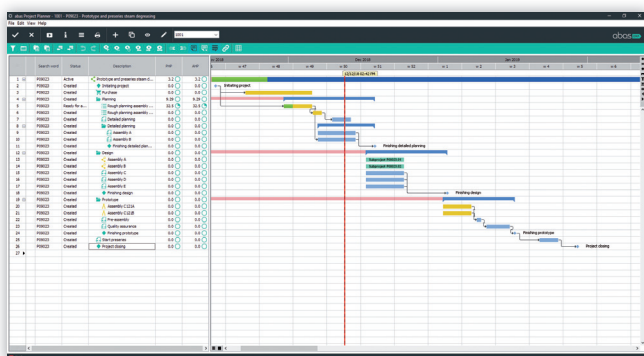
Its deep integration in the production process offers particular added value to mechanical engineering companies, plant and one-off manufacturers as well as companies in which development plays an important role. Extensive evaluation options provide a quick overview of the project status.

INTERACTIVE PROJECT PLANNER

Interactive plans and diagrams enable you to easily and clearly manage and visualize the history and progress of your projects. The project center offers your project team optimal transparency with regard to status, milestones, employees, deadlines and budgets. Bottlenecks and deviations from the plan are identified early and countermeasures can be initiated in good time.

abas PM also supports you in mapping complex contexts in any structure depth within a project schedule. Project tasks can be scheduled as required. Interrelations are represented through predecessor and successor relations in the project plan and can be monitored accordingly. Integrated forward and backward scheduling as well as the display of the critical path facilitate the initial planning of complex projects.

Filters allow you to create a custom project view. Special zoom functions as well as a graphical project planner, using which you can map individual or multiple projects, ensure a clear view of the project. Order and production processes as well as service processes or subprojects can be triggered and date changes monitored directly from the project plan. In the case of deadline changes, the calculation functions help you reschedule projects.



Clear visualization of the project tasks and progress in the interactive project planner

PLANNING RESOURCES EFFICIENTLY

You would like to manage employees and resources for multiple projects? The interactive, graphical resource planner of abas PM allows you to visualize your current plans with regard to employees and resources. You can see the workload of all employees and project teams at a glance and make reliable capacity decisions on this basis. You can reorganize the workload manually with just a few clicks or automatically using predefined distribution curves.

MANAGING PROJECTS PROFITABLY

With abas PM, you receive evaluations of your profit situation for completed and active projects at any time and can perform a corresponding cost planning cumulated across all projects. You draw up budgets, monitor costs, and react to changes appropriately to ensure your project remains profitable.

Scheduling, procurement, and storage are project-based so that you can make valid statements on current and expected costs, the cost behavior pattern as well as possible causes of the cost incurrence in all project phases using project cost accounting. KPI analyses and reports enable flexible costing and minimize typical project risks, such as budget overruns, miscalculations and unplanned costs.

FOR YOUR COMPANY

In three editions, abas PM offers you tailor-made, user-oriented solutions that are practically tailored to different structures, processes and requirements regardless of your industry and company size.

For example, abas PM Basic supports the project management of smaller working groups and internal project teams, while the functions of abas PM Advanced meet the requirements of project and engineering service providers.

abas PM Professional is the full edition of abas PM. Small and medium-sized businesses particularly benefit from a fully integrated project management solution for mapping complex multi-project and multi-resource processes including costing and change order management.

**PLEASE CONTACT US.
WE WILL BE HAPPY TO ADVISE YOU.**

Email: sales@abas-erp.com

Description	Product	Quantity	Unit	Allocated	Total	Sub-value 1	Sub-value 2	Sub-value 3	Sub-value 4	Dist
Complete assembly		20	n	20,000.00	20,000.00	15,000.00	15,000.00	212,270.00	0.00	0.00
Planning	ENGINEERING	1	n	0.00	20,000.00	15,000.00	15,000.00	0.00	0.00	0.00
Analysis	ENGINEERING	40	n	0.00	3,200.00	3,200.00	0.00	0.00	0.00	0.00
Order specification	PROJEKTMANAGEMENT	100	n	0.00	6,500.00	6,500.00	0.00	0.00	0.00	0.00
Feasibility analysis	ENGINEERING	40	n	0.00	3,200.00	3,200.00	0.00	0.00	0.00	0.00
Risk assessment	ENGINEERING	20	n	0.00	1,600.00	1,600.00	0.00	0.00	0.00	0.00
Machine module A	ENGINEERING	1	n	0.00	10,000.00	10,000.00	0.00	0.00	0.00	0.00
Component technology	ENGINEERING	35	n	0.00	3,500.00	3,500.00	0.00	0.00	0.00	0.00
Supporting frame	ENGINEERING	35	n	0.00	29,791.44	29,791.44	0.00	0.00	0.00	0.00
Robotics	ENGINEERING	30	n	0.00	3,280.00	3,280.00	0.00	0.00	0.00	0.00
Software	ENGINEERING	30	n	0.00	3,520.00	3,520.00	0.00	0.00	0.00	0.00
Machine module B	ENGINEERING	1	n	0.00	10,000.00	10,000.00	0.00	0.00	0.00	0.00
Component technology	ENGINEERING	40	n	0.00	2,000.00	2,000.00	0.00	0.00	0.00	0.00
Supporting frame	ENGINEERING	35	n	0.00	2,200.00	2,200.00	0.00	0.00	0.00	0.00
Robotics	ENGINEERING	35	n	0.00	32,275.00	32,275.00	0.00	0.00	0.00	0.00
Software	ENGINEERING	35	n	0.00	3,500.00	3,500.00	0.00	0.00	0.00	0.00

Detailed preliminary and final costing of projects

YOUR BENEFITS

- Mapping processes practically
- Secure and profitable management of projects
- Planning resources efficiently
- Keeping costs under control
- Creating transparency for all departments
- Suitable for businesses of all types and sizes